

Transparency

# CLIP-IN DOOR

 **ADLER**  
S.A.S  
LA TECHNIQUE AU SERVICE DU VERRE

 **GLASSOLUTIONS**  
SAI

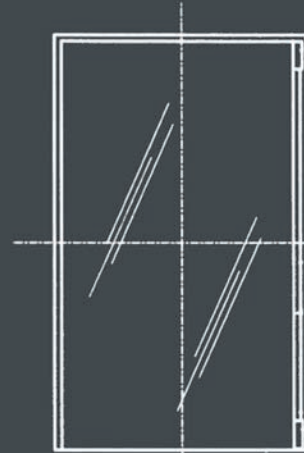
# ELEGANCE

## Product composition:

The product consists of 2 (glass-glass installation) or 3 (wall-glass installation) profiles made from precision aluminium extrusions. Assemblies are tightened using stainless steel screws and corrosion-resistant spring washers offering an elastic reserve. The product is 100% metal.

Standard finishes: natural anodising or brushed stainless steel finish.

Overall dimensions: thickness 10 mm and width 16 mm.



Tested by CSTC according to EN 947 and EN 948 standard



## Technical performance:

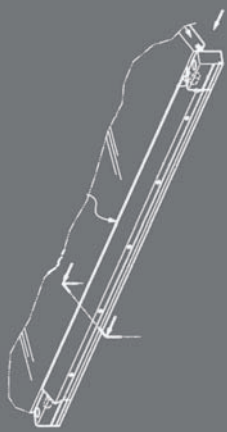
The nearly perfect jointing between the glass and the fixed element ensures:

- (1) limited thermal exchanges without trim, seal or rabbet (enhanced transparency);
- (2) significantly improved sound insulation in comparison with conventional tempered glass constructions (construction clearances reduced by nearly a factor of 10).

## Environmental and health performance:

Owing to its geometry, these CLIP-IN hinges prevent all risk of pinched fingers.

The product, made of aluminium and steel, is 100% recyclable. Extremely lightweight and made in France, this product benefits from optimal transport characteristics.



Miniaturisation

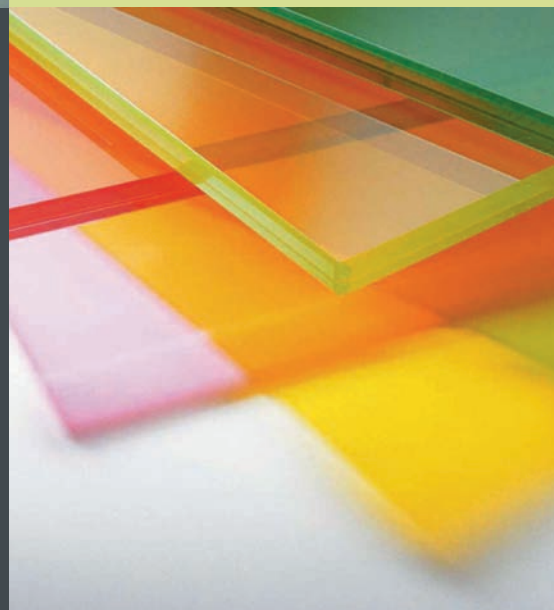
Pure mechanics

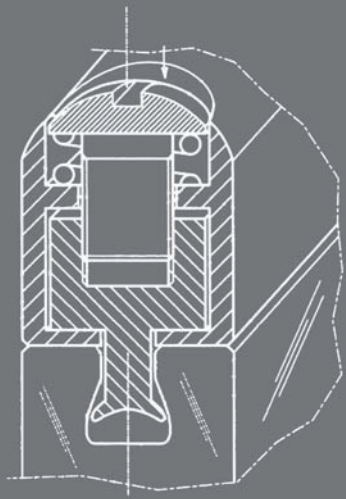
Perfect mastery of the glass

Optimised design

Standardised Components

For separating doors





# INNOVATION



**A high degree of innovation by ADLER SAS and SGG:**  
Seeing is believing! The door's attachment system and hinge are completely hidden in the thickness of the door and in the wall. No other product even compares.

The mechanical fastening of the CLIP-IN hinge in the edge of the glass guarantees safety, reproducibility, and thus the reliability of the assembly.

For perfect durability, this product incorporates proven solutions for frictionless and wear-free pivoting (ADLOCK® range). By design, the assembly withstands all applicable fatigue and static load strength testing (e.g. well beyond the Class 4 overload rating as per standard NF EN 1192).

## Degree of innovation on the market:

A joint patent has been filed by ADLER SAS and SAINT-GOBAIN GLASS SOLUTIONS concerning this product.

Doubly innovating:

- (1) by the product itself;
- (2) by the preliminary machining of the glass into which it is fitted and the associated SAINT-GOBAIN GLASS SOLUTIONS patent.

Suitable for 10 mm or 12 mm thick glass: monolithic tempered glass; or laminated glass or other. A wide variety of decor options are available: mirror, colour, printed...

Design

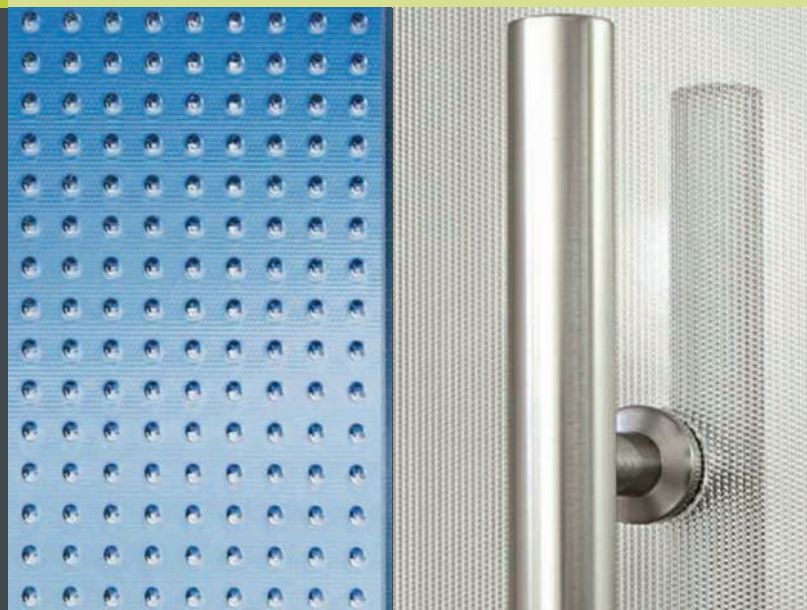
Finesse

Safety

Ergonomics

Transparent constructions

Shower stalls, Display cases





E-mail: [commercial@adler-sa.com](mailto:commercial@adler-sa.com)

Site: [www.adler-sa.fr](http://www.adler-sa.fr)

Tel.: +33 (0)1 60 03 62 00 • Fax: +33 (0)1 60 03 62 49

Z.A. La Barogne • 9, Avenue des 22 Arpents

77230 Moussy le Neuf • France

SAS with capital of 2,014,000 euros • Meaux Corporate and Trade Register