

Ajouter 6 mm de chaque côté des pochettes porte-affiche pour déterminer la distance entre les câbles.

Add 6 mm on each side of poster holders to determine distance between cables.

**1**

Visser la FIXATION HAUTE au plafond en utilisant la VIS fournie avec le kit.

Screw TOP FIXING into ceiling using provided SCREW.

**2**

Insérer le SERRE CÂBLE HAUT (bague fileté) dans la FIXATION HAUTE puis visser les 2 vis Allen pour le maintenir dans la FIXATION HAUTE.

Insert UPPER CABLE CLAMP (Threaded Ring) into TOP FIXING, then screw in the 2 Allen screws to secure it in the TOP FIXING.

**3**

Visser la FIXATION BASSE au sol (à l'aplomb de la FIXATION HAUTE) en utilisant la VIS fournie avec le kit.

Screw FLOOR ANCHOR (aligned with the TOP FIXING) into the floor, using the provided SCREW.

**4**

Passer le câble (tige) dans le TENDEUR, le RESSORT, puis le SERRE CÂBLE BAS (Bague d'arrêt). Tendre le câble (tige) manuellement près de la FIXATION BASSE et le couper à l'aide d'une tenaille à hauteur de la moitié de la FIXATION BASSE (Repère A).

Pass the cable (rod) through the ADJUSTING SLEEVE, the SPRING, the washer and the LOWER UNIVERSAL GRIP (Locking Ring). Manually pull the cable (rod), close to the FLOOR ANCHOR and cut it with a wire-cutter so that it reaches halfway up the FLOOR ANCHOR (MARK A).

**5**

Laisser un espace de 5 mm entre le bas du SERRE CÂBLE BAS (Bague d'arrêt) et le haut de la FIXATION BASSE et visser fermement la Vis Allen du SERRE CÂBLE BAS (Bague d'arrêt).

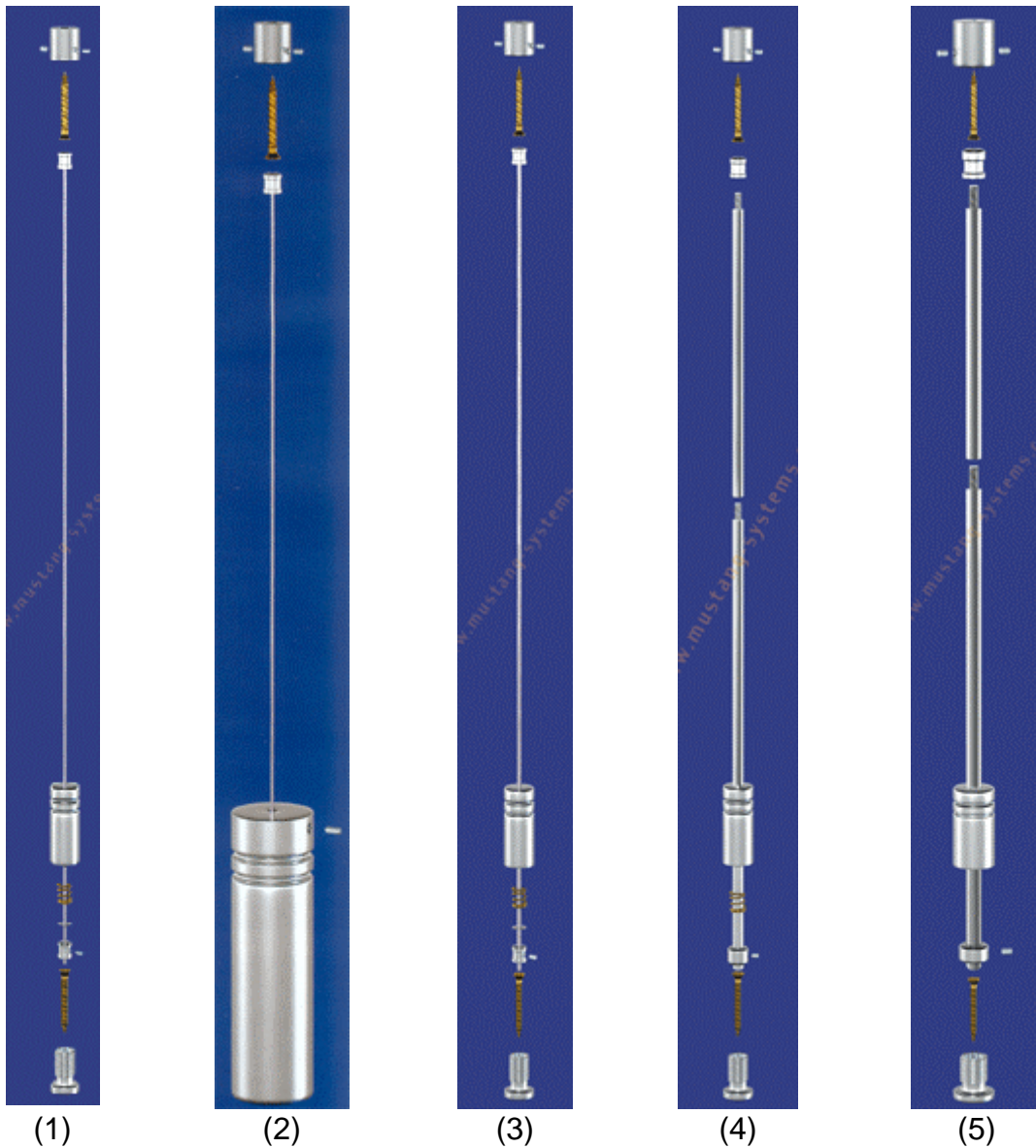
Leave 5 mm clearance between the bottom of the LOWER UNIVERSAL GRIP (Locking Ring) and the top of the FLOOR ANCHOR, and screw in firmly the Allen screw of the LOWER UNIVERSAL GRIP (Locking Ring).

**6**

Visser le tendeur sur la FIXATION BASSE sans excès.

Screw the tensioner onto the FLOOR ANCHOR without over-tightening it.





- CABLE 1,5 MM / 1,5 MM CABLE - (ref. 606 00V)
- 3) CABLE 3 MM / 3 MM CABLE - (ref. 606 08D)

#### **KIT POUR FIXATION SOL-PLAFOND (4 METRES)**

- Fixation haute  $\varnothing$  18,5 mm
  - Câble en acier inoxydable L. 4 m
  - Fixation basse avec tendeur
- (Clé Allen et vis fournie avec le kit)

#### **FLOOR / CEILING FIXING KIT (4 METRES)**

- 18,5 mm  $\varnothing$  top fixing
  - 4 m stainless steel cable
  - Floor anchor with adjusting sleeve
- (Allen key and fixing screws supplied)

## **2) CABLE 1,5 MM / 1.5 MM CABLE** - (ref. 606 01W)

### **KIT AVEC LEST (4 METRES)**

- Fixation haute ø 18,5 mm
- Câble en acier inoxydable L. 4 m
- Lest ø 40 mm / L. 140 mm /1,4 kg

(Clé Allen et vis fournie avec le kit)

### **BALLAST KIT (4 METRES)**

- 18,5 mm ø top fixing
- 4 m stainless steel cable
- 40 ø mm ballast / L. 140 mm / 1,4 kg

(Allen key and fixing screws supplied)

## **4) TIGE 6 MM / 6 MM ROD COMPONENTS** - (ref. 606 15M)

### **KIT POUR FIXATION SOL-PLAFOND**

- Fixation haute ø 18,5 mm
- Fixation basse avec tendeur

(Clé Allen et vis fournie avec le kit)

### **FLOOR / CEILING FIXING KIT**

- 18,5 mm ø top fixing
- Floor anchor with adjusting sleeve

(Allen key and fixing screws supplied)

Kits livrés sans tige inox / Kits delivered without stainless steel rod

## **5) TIGE 10 MM / 10 MM ROD COMPONENTS** - (ref. 606 24W)

### **KIT POUR FIXATION SOL-PLAFOND**

- Fixation haute ø 24,5 mm
- Fixation basse avec tendeur

(Clé Allen et vis fournie avec le kit)

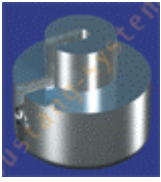
### **FLOOR / CEILING FIXING KIT**

- 24,5 mm ø top fixing
- Floor anchor with adjusting sleeve

(Allen key and fixing screws supplied)

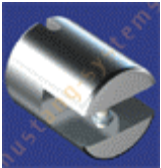
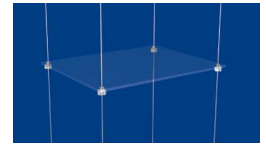
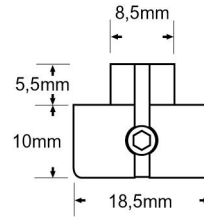
Kits livrés sans tige inox / Kits delivered without stainless steel rod

## CABLE 1,5 MM / 1,5 MM CABLE COMPONENTS



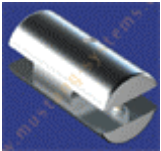
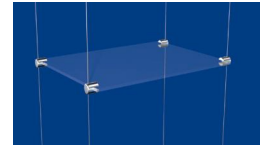
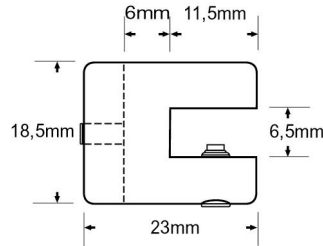
### 606 02X

Support pour tablette percée /  
perçage  $\varnothing$  10 mm  
Pierced shelf support / 10 mm  
 $\varnothing$  hole fix



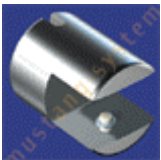
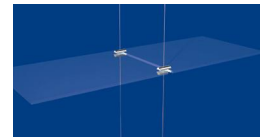
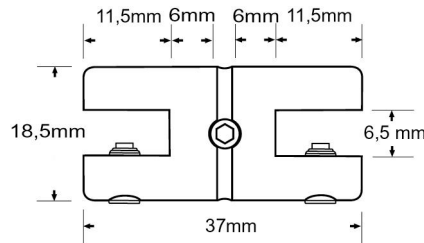
### 606 03Y

Taquet pour tablette jusqu'à 6  
mm  
Clip bracket for shelf up to 6  
mm



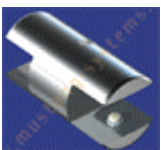
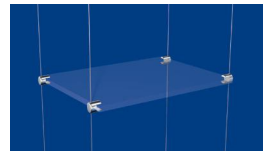
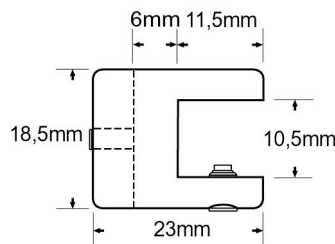
### 606 04Z

Taquet double pour tablette  
jusqu'à 6 mm  
Double clip bracket for shelf up  
to 6 mm



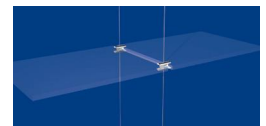
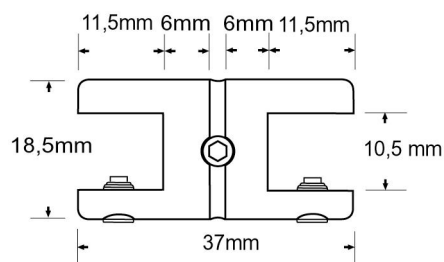
### 606 05A

Taquet pour tablette jusqu'à 10  
mm  
Clip bracket for shelf up to 10  
mm



### 606 06B

Taquet double pour tablette  
jusqu'à 10 mm  
Double clip bracket for shelf up  
to 10 mm



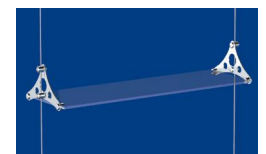
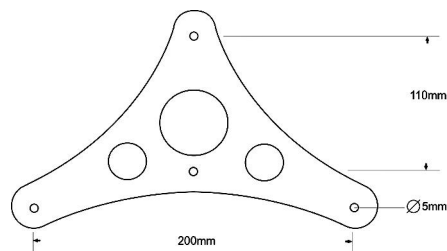
### 606 07C

Console pour tablette jusqu'à 8  
mm

- finition Aluminium  
brossé / épaisseur 2  
mm

Shelf console for up to 8 mm

- Brushed Aluminium  
finish /  
2 mm thickness

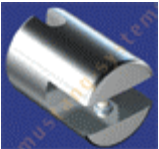
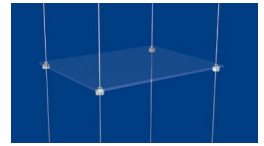
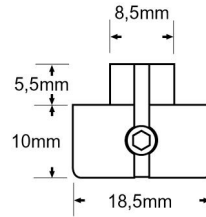


## CABLE 3 MM / 3 MM CABLE COMPONENTS



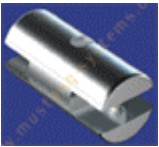
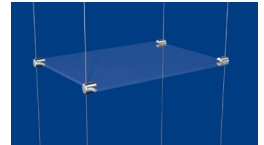
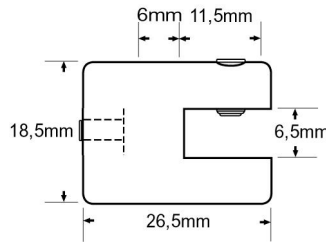
### 606 09F

Support pour tablette  
percée / perçage  $\varnothing$  10 mm  
Pierced shelf support / 10  
mm  $\varnothing$  hole fix



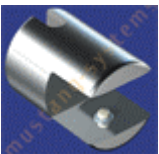
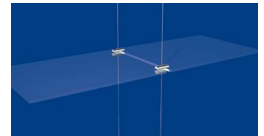
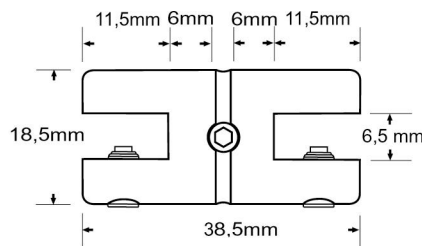
### 606 10G

Taquet pour tablette jusqu'à  
6 mm  
Clip bracket for shelf up to 6  
mm



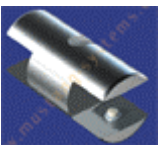
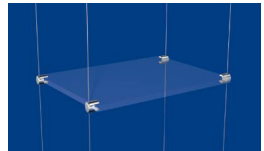
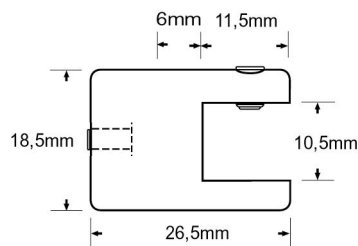
### 606 11H

Taquet double pour tablette  
jusqu'à 6 mm  
Double clip bracket for shelf  
up to 6 mm



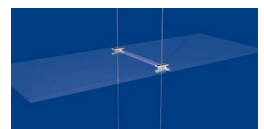
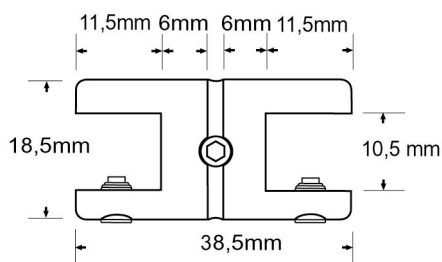
### 606 12J

Taquet pour tablette jusqu'à  
10 mm  
Clip bracket for shelf up to  
10 mm



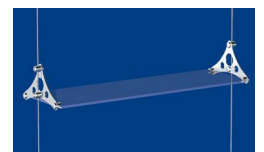
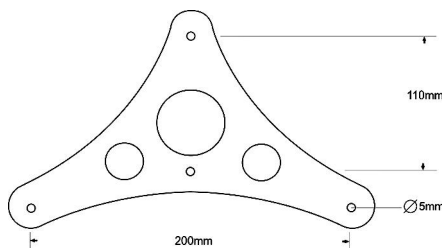
### 606 13K

Taquet double pour tablette  
jusqu'à 10 mm  
Double clip bracket for shelf  
up to 10 mm

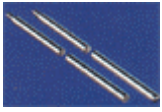


### 606 14L

Console pour tablette  
jusqu'à 8 mm  
- finition Aluminium brossé /  
épaisseur 2 mm  
Shelf console for up to 8  
mm  
- Brushed Aluminium finish /  
2 mm thickness

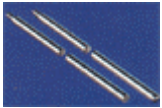


## TIGE 6 MM / 6 MM ROD COMPONENTS



### 606 16N

L.1 M / Tige inoxydable  
 - Filetée et taraudée  
 L. 1 M / Stainless steel  
 rod  
 - Threaded ends



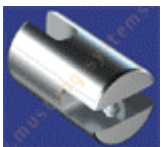
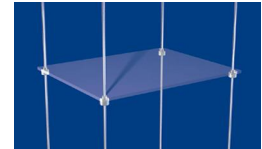
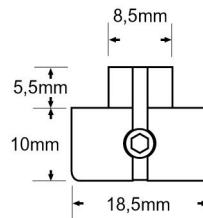
### 606 17P

L.1,5 M / Tige inoxydable  
 - Filetée et taraudée  
 L. 1,5 M / Stainless steel  
 rod  
 - Threaded ends



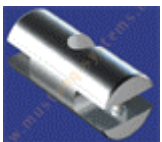
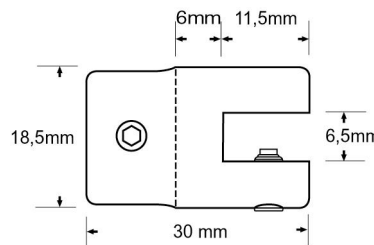
### 606 18Q

Support pour tablette  
 percée / perçage  $\varnothing$  10 mm  
 Pierced shelf support / 10  
 mm  $\varnothing$  hole fix



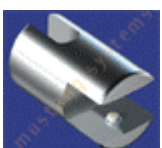
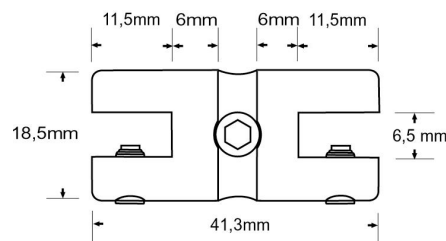
### 606 19R

Taquet pour tablette  
 jusqu'à 6 mm  
 Clip bracket for shelf up to  
 6 mm



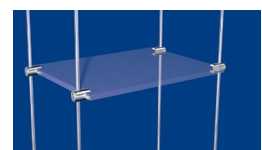
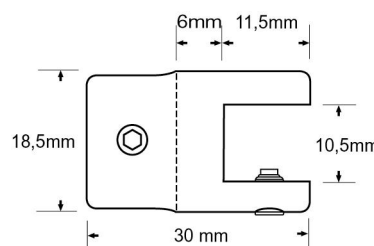
### 606 20S

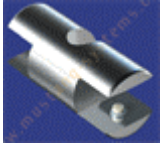
Taquet double pour  
 tablette jusqu'à 6 mm  
 Double clip bracket for  
 shelf up to 6 mm



### 606 21T

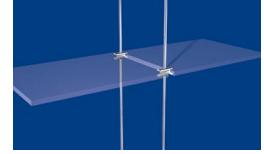
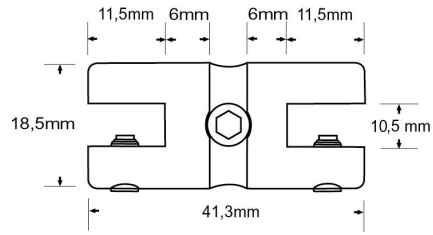
Taquet pour tablette  
 jusqu'à 10 mm  
 Clip bracket for shelf up to  
 10 mm





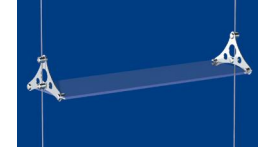
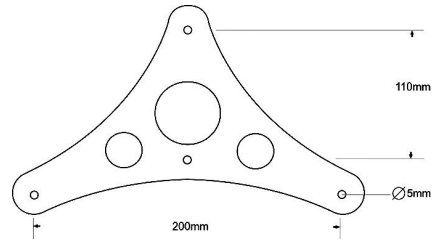
### 606 22U

Taquet double pour  
tablette jusqu'à 10 mm  
Double clip bracket for  
shelf up to 10 mm



### 606 23V

Console pour tablette  
jusqu'à 8 mm  
- finition Aluminium  
brossé / épaisseur 2 mm  
Shelf console for up to 8  
mm  
- Brushed Aluminium  
finish / 2 mm thickness



## TIGE 10 MM / 10 MM ROD COMPONENTS



### 606 25X

L.1 M / Tige inoxydable  
- Filetée et taraudée  
L. 1 M / Stainless steel rod  
- Threaded ends



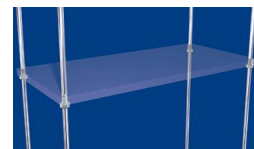
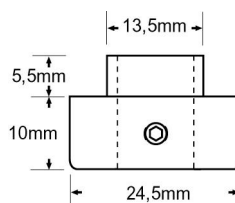
### 606 26Y

L.1,5 M / Tige inoxydable  
- Filetée et taraudée  
L. 1,5 M / Stainless steel rod  
- Threaded ends



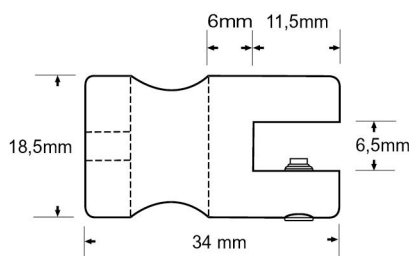
### 606 27Z

Support pour tablette percée  
/ perçage  $\varnothing$  14 mm  
Pierced shelf support / 14  
mm  $\varnothing$  hole fix



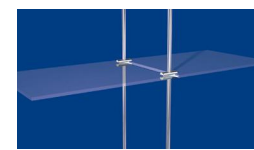
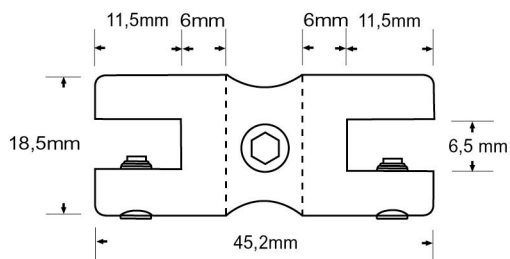
### 606 28A

Taquet pour tablette jusqu'à  
6 mm  
Clip bracket for shelf up to 6  
mm



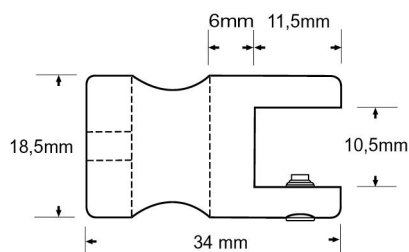
### 606 29B

Taquet double pour tablette  
jusqu'à 6 mm  
Double clip bracket for shelf  
up to 6 mm



### 606 30C

Taquet pour tablette jusqu'à  
10 mm  
Clip bracket for shelf up to  
10 mm



Tige 10 mm / 10 mm rod components

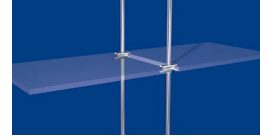
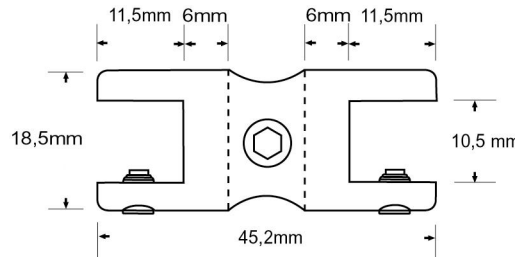




### 606 31D

Taquet double pour tablette  
jusqu'à 10 mm

Double clip bracket for shelf  
up to 10 mm



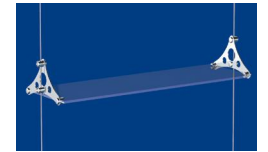
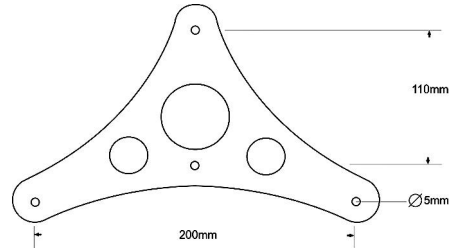
### 606 32F

Console pour tablette  
jusqu'à 8 mm

- finition Aluminium brossé /  
épaisseur 2 mm

Shelf console for up to 8 mm

- Brushed Aluminium finish /  
2 mm thickness



**ADLER S.A.**

La Technique au Service du Verre

Z.A. La Barogne - 17, avenue des 22 Arpents - FR-77230 MOUSSY LE NEUF

Tél.: 33.1.60.03.62.00 - Fax : 33.1.60.03.62.49

e-mail : [adler-sa@wanadoo.fr](mailto:adler-sa@wanadoo.fr) Site internet : [www.adler-sa.fr](http://www.adler-sa.fr)